

NOTES

GENERAL

- THIS DRAWING SHALL BE READ IN CONJUNCTION WITH THE CONTRACT DRAWINGS AND SPECIFICATION.
- THE CONSTRUCTION OF THE WORKS SHALL COMPLY WITH THE WATER CORPORATION'S WATER SUPPLY RETICULATION MANUAL.
- ALL WELDING AND JOINING OF THERMOPLASTICS TO COMPLY WITH WATER CORPORATION'S SPECIFICATION WS-2.
- ALL DIMENSIONS ARE IN METRES UNLESS OTHERWISE NOTED.
- THE MAINS SHALL BE LAID ON A 2.1m (COMMON TRENCHING) ALIGNMENT MEASURED FROM THE CENTRE OF THE PIPE TO THE ROAD RESERVE BOUNDARY.
- THE MAINS SHALL BE LAID BETWEEN A MINIMUM AND MAXIMUM COVER IN ACCORDANCE WITH THE WATER CORPORATION MANUAL.
- ALL SERVICES TO LOTS SHALL BE FULLY PRELAI D UNLESS NOTED OTHERWISE.
- THE CONTRACTOR SHALL REPORT ANY DISCREPANCY OR CLASH WITH OTHER SERVICES TO THE SUPERINTENDENT.
- THE CONTRACTOR SHALL ENSURE THAT COVER ON WATER MAIN TO BE LOWERED TO ACCOMMODATE FUTURE INTERSECTIONS.
- CONTRACTOR TO MAKE ALLOWANCE FOR, INCLUDING BUT NOT LIMITED TO - EXCAVATION, SITE SAFETY, BACKFILL AND REINSTATEMENT AT CONNECTION POINTS.
- CONTRACTOR TO CONFIRM LEVEL OF EXISTING WATER AT CONNECTION POINT. IF EXISTING WATER PIPE IS NOT TO WATER CORPORATION STANDARD DEPTH CONTRACTOR SHALL NOTIFY SUPERINTENDENT PRIOR TO COMMENCEMENT OF WORKS.

MAINS AND SERVICES

2.1. CONSTRUCT MAINS OF:

100P-12	-	512.0m
250P-12	-	345.0m
315PE PN16	-	22.4m
VALVES	7	
HYDRANT	5	

2.2. CONSTRUCT SERVICES OF:

SHORT SINGLE	-	4
SHORT DUAL	-	20
LONG SINGLE	-	5
LONG DUAL	-	17
DEFERRED SERVICE	-	0
TOTAL LOTS SERVED	-	83

LEGEND

- 150P-12 PROPOSED WATER MAIN LAYOUT, MAIN SIZE AND TYPE
- 150P-12 EXISTING WATER MAIN LAYOUT, MAIN SIZE AND TYPE
- 150P-12 FUTURE WATER MAIN LAYOUT, MAIN SIZE AND TYPE
- SERVICE CROSSING COMPLETE
- PROPOSED HYDRANT
- PROPOSED SLUICE VALVE
- CHANGE IN PIPE SIZE
- BLANK END AND FLUSHING POINT
- FL FR SERVICE LOCATION
- "D" DEFERRED SERVICE
- PROPOSED/EXISTING RETAINING WALL
- RETICULATION AREA BOUNDARY
- LOTS SERVICED IN THIS STAGE BUT RELEASED IN FUTURE STAGE
- LOTS SERVICED IN PREVIOUS STAGE AND RELEASED IN THIS STAGE

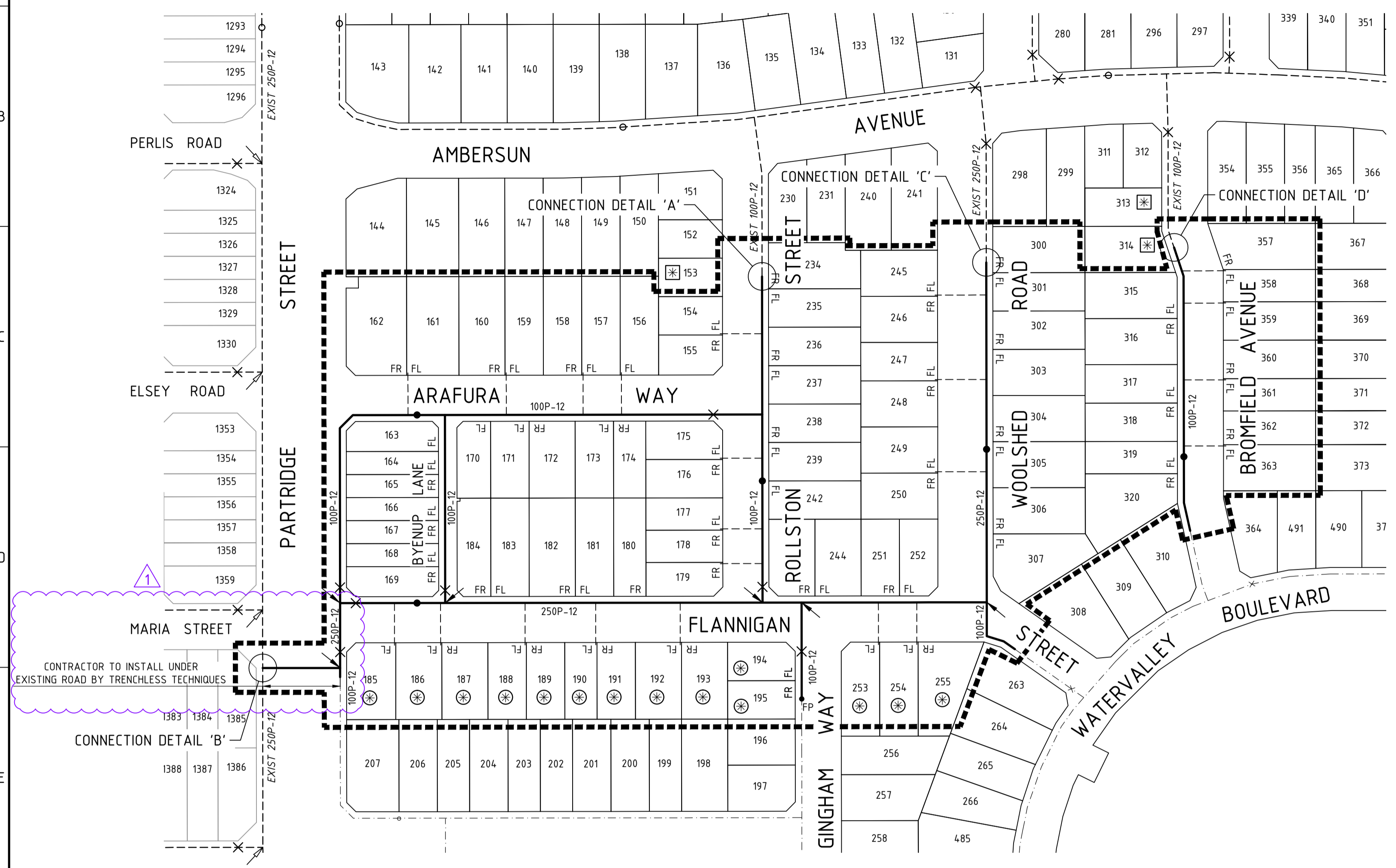
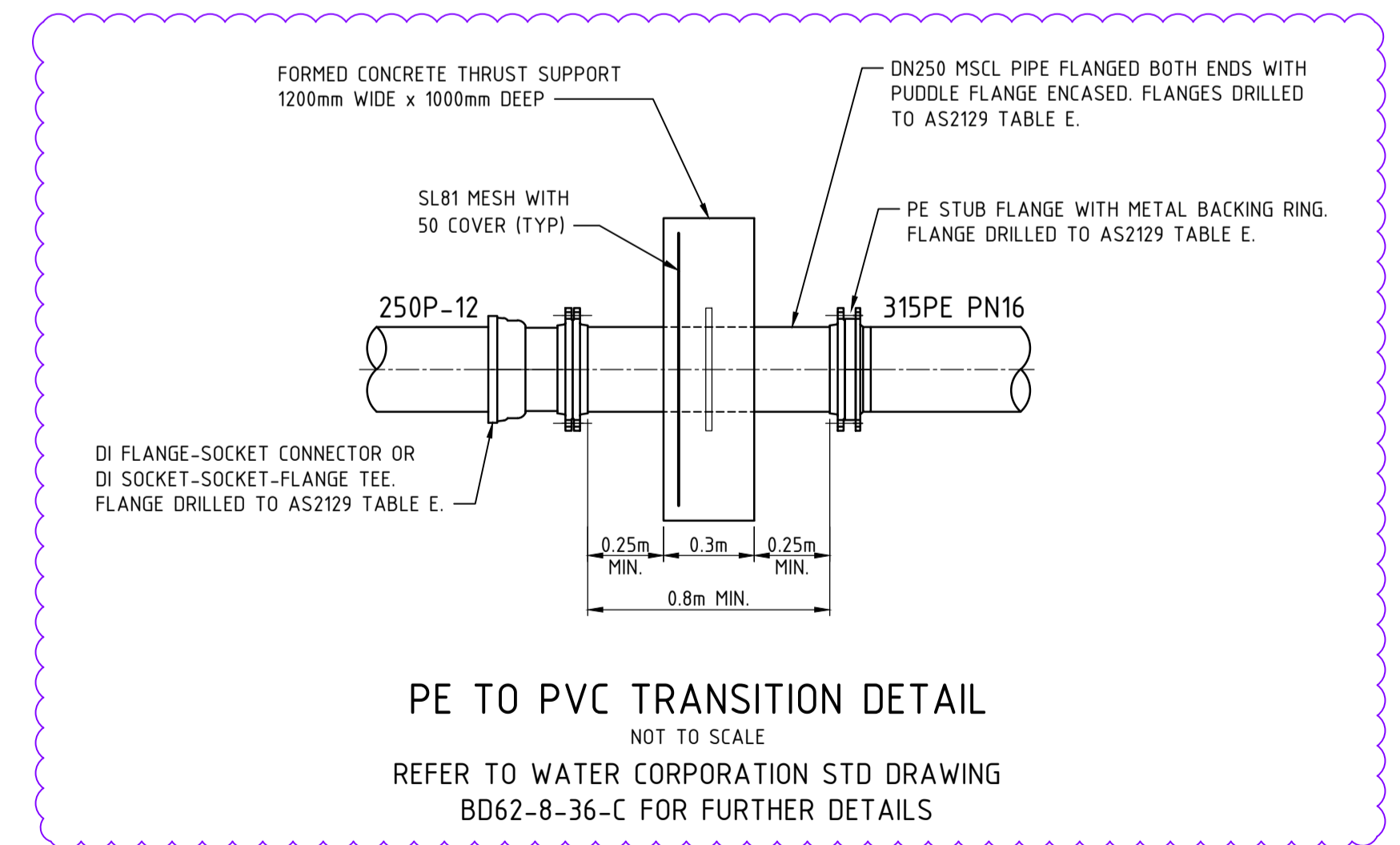
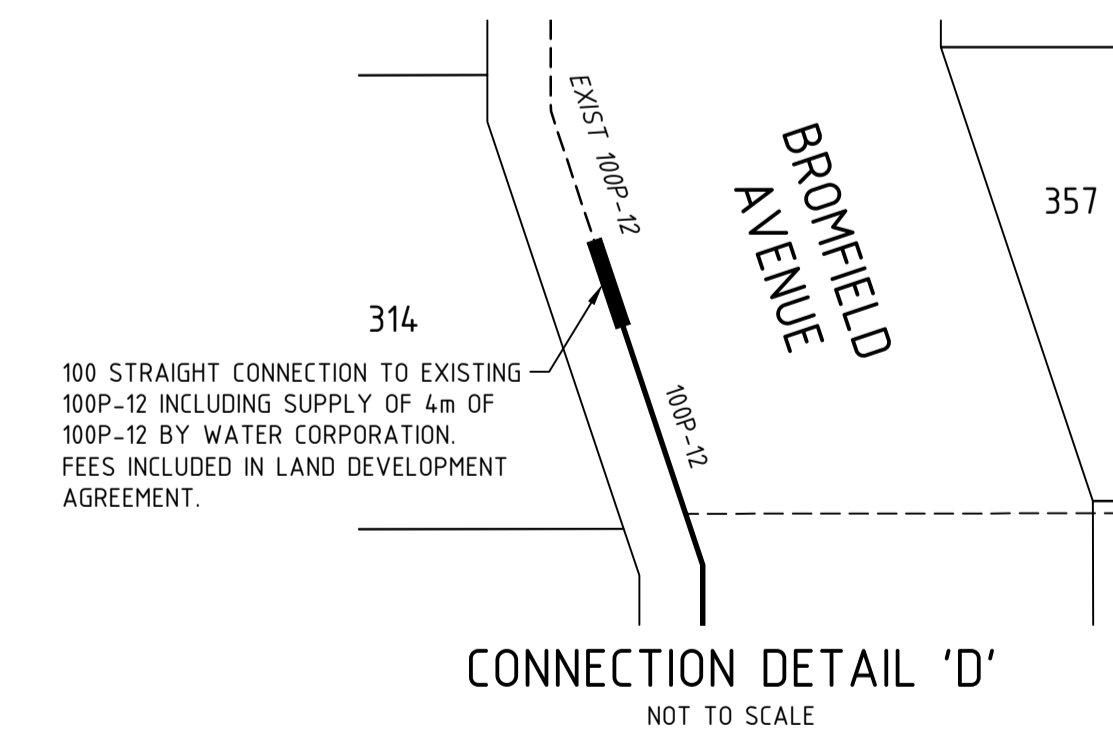
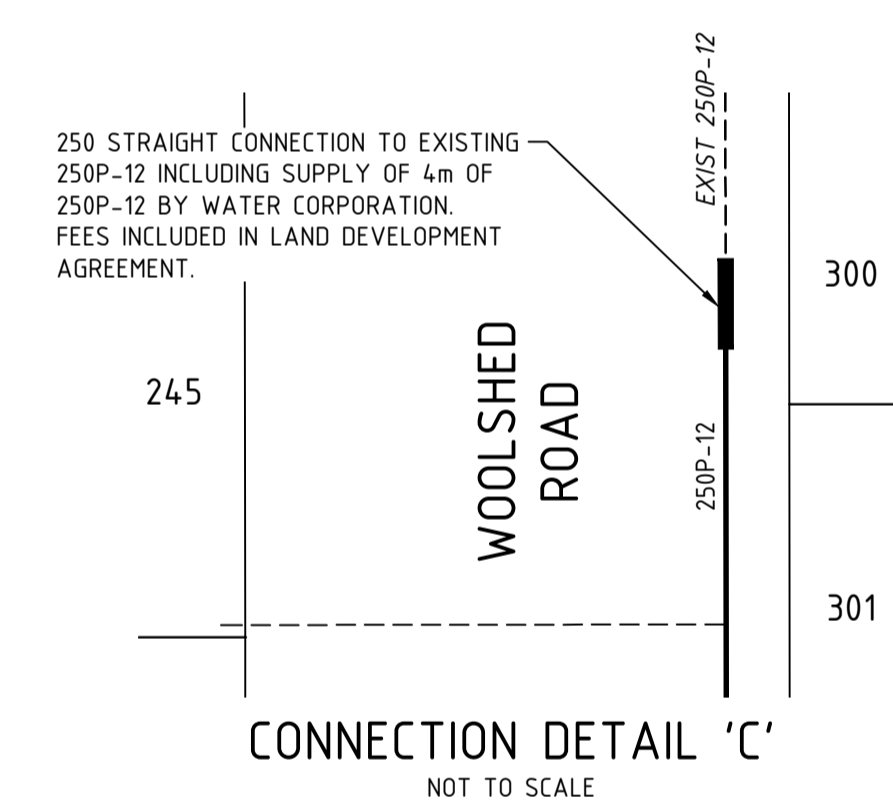
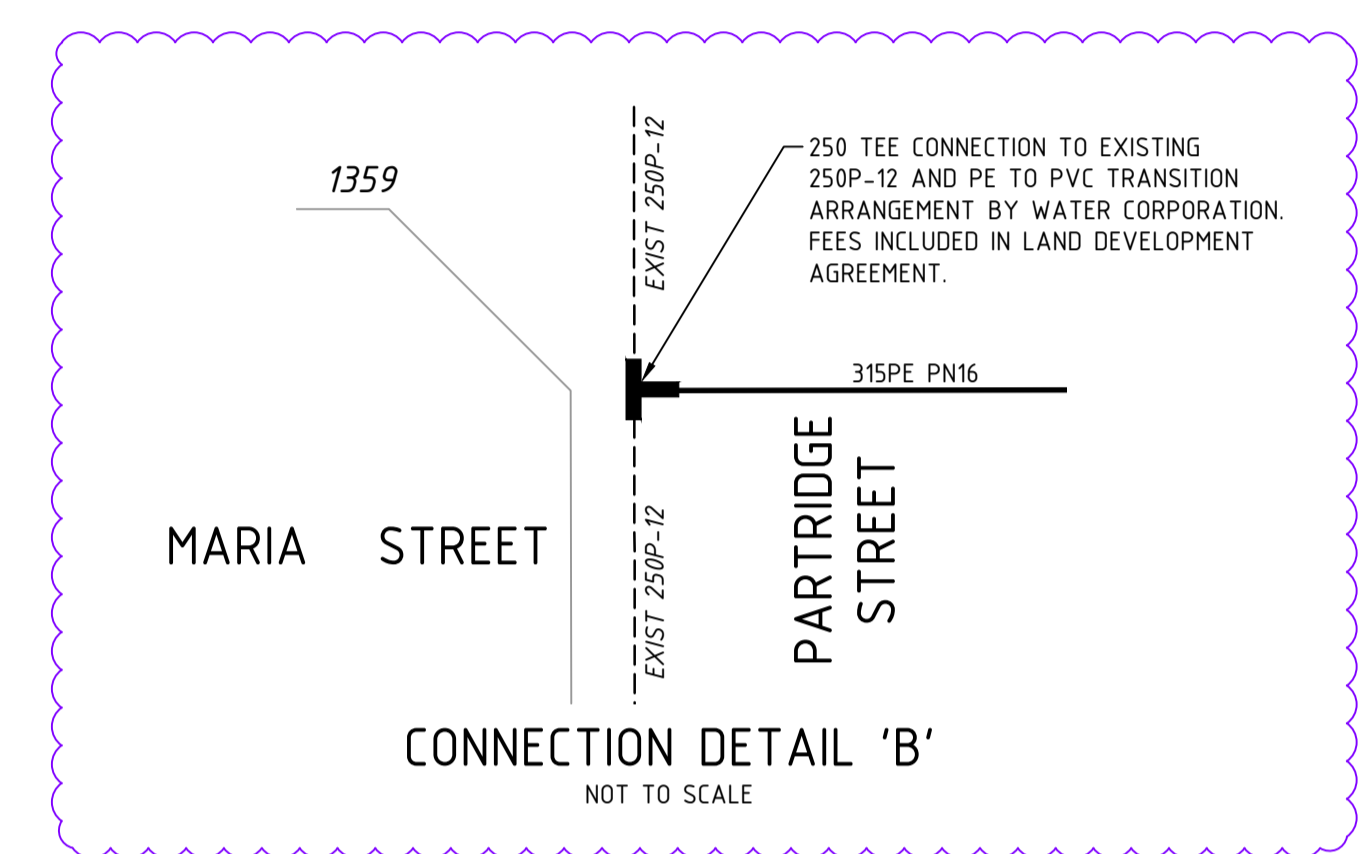
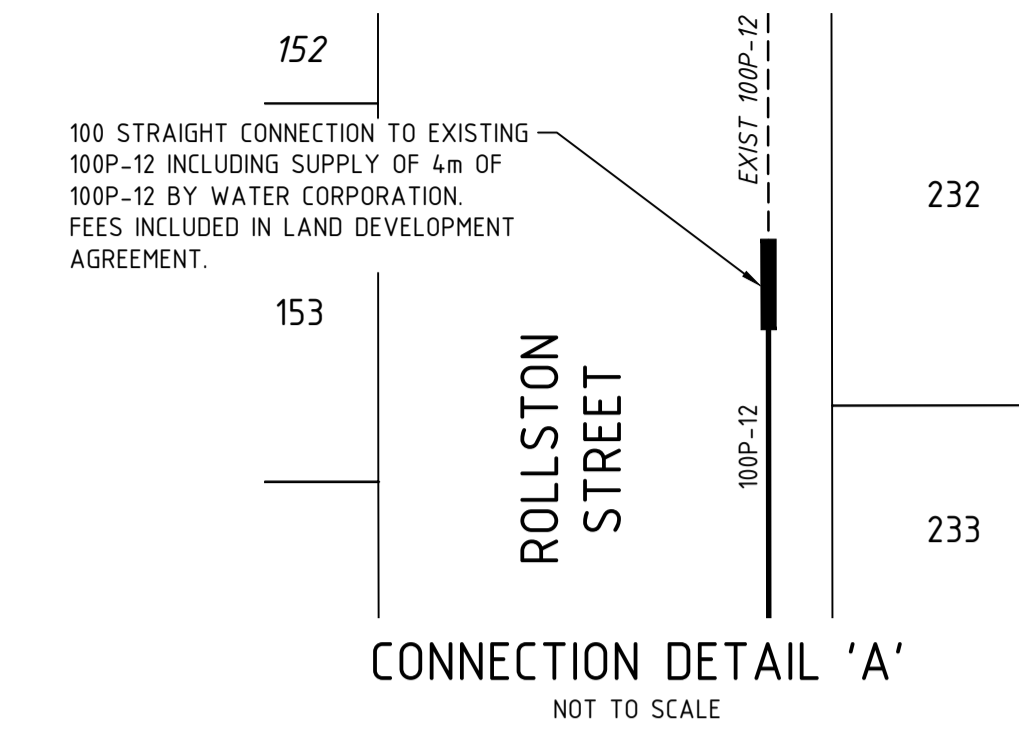
WARNING
BEWARE OF UNDERGROUND SERVICES.
The location of underground cables are approximate only and their exact position should be checked on site. No guarantee is given that all existing cables and services are shown. Locate all underground cables and services before commencement of work. Refer to Worksafe Regulation 3.2.1.

DIAL1100
BEFORE YOU DIG

MULTI STAGE WORKS AGREEMENT
RETICULATION SUBMISSION
THIS PLAN IS RECEIVED AS BEING IN ACCORDANCE WITH THE ENDORSED MSWA CONCEPT PLAN: L080-100-01B
COMPLIANCE WITH THIS CONCEPT PLAN AND WATER CORPORATION MANUALS HAS NOT BEEN CHECKED AND REMAINS THE RESPONSIBILITY OF THE CONSULTING ENGINEER.
(SIGNED) PETER HUNTER 05.04.2018
RECEIVED LAND SERVICING BRANCH

MV89-103-001-01B

CITY OF SWAN
M/E FILE NO. : JT1 2018 02500 V01



CONTRACTOR TO INSTALL UNDER EXISTING ROAD BY TRENCHLESS TECHNIQUES



REV	DATE	DRAWN	CHECKED	APPROVED	DESCRIPTION
1	04.09.18	MS	BG	KP	PARTRIDGE STREET CROSSING LOCATION AMENDED, CONNECTION DETAIL B UPDATED, VALVE ADDED
0	02.05.18	MS	BG	KP	ISSUED FOR CONSTRUCTION
B	04.04.18	MS	BG	KP	ISSUED FOR FINAL WATER CORPORATION APPROVAL
A	27.03.18	MS	BG	KP	ISSUED FOR INITIAL WATER CORPORATION APPROVAL

JDSi
CONSULTING ENGINEERS
Workzone, Level 6, 1 Nash Street, Perth WA 6000
P: (08) 9227 0595 F: (08) 9227 8617

Cedar Woods
PROPERTIES LIMITED

CLIENT:
PROJECT:
DRAWING TITLE:

LOT 346 & 347 WOOLLCOTT AVENUE BRABHAM STAGE 5
WATER RETICULATION PLAN

DRAWN M. SMITHERS	WAPC No. 150306
DESIGNED M. SMITHERS	SCALE @ A1 1 : 1000
PROJECT MANAGER K. PANNU	DATUM AHD
JDSi PROJECT No. JDS12609.05	CO-ORDS PCG-94
DRAWING No. C400	REVISION 1